



The University of California, Merced, is offering a Ph.D. program\* in sociology with an emphasis on social inequality (gender, race/ethnicity, social class, sexuality), political sociology and social movements, education and immigration.

\*We are currently in the process of seeking final approval from CCGA and WSCUC for a stand-alone graduate Ph.D. program in Sociology in 2015.

› APPLICATIONS ARE BEING ACCEPTED. For more information on the program visit:  
[sociology.ucmerced.edu/graduate-studies](http://sociology.ucmerced.edu/graduate-studies)

› For more information about the application process, visit:  
[graduatedivision.ucmerced.edu/prospective-students/how-apply](http://graduatedivision.ucmerced.edu/prospective-students/how-apply)

## FACULTY RESEARCH AREAS



**PAUL ALMEIDA**

*University of California, Riverside*

Professor Almeida studies social movements with a focus on collective action during economic and political transitions in developing countries.



**IRENEE R. BEATTIE**

*University of Arizona*

Professor Beattie studies racial/ethnic, class, and gender inequality in education, with a particular focus on how schooling and family contexts during adolescence influence the transition from high school to college.



**KYLE DODSON**

*Indiana University*

Professor Dodson studies the role of political institutions in fostering political behavior and attitudes with an emphasis on cross-national differences and over-time change.



**EDWARD OROZCO FLORES**

*University of Southern California*

Professor Flores studies race, gender and religion, with a specific focus on the post-incarceration experience.



**TANYA GOLASH-BOZA**

*University of North Carolina*

Professor Golash-Boza's research focuses on the human rights implications of U.S. immigration policy, with an emphasis on deportations, as well on race and racism in the U.S. and Latin America.



**LAURA HAMILTON**

*Indiana University*

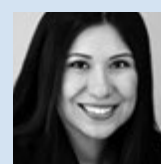
Professor Hamilton studies gender, family, and education, with a specific focus on the transition to adulthood among college students.



**WHITNEY LASTER PIRTLE**

*Vanderbilt University*

Professor Laster Pirtle studies race, with a focus on groups positioned in the middle of the racial hierarchy, as well as racial identity and health disparities.



**ZULEMA VALDEZ**

*University of California, Los Angeles*

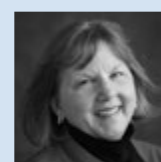
Professor Valdez specializes in the study of social inequality and stratification, intersectionality, entrepreneurship, and Latino/as in the U.S.



**NELLA VAN DYKE**

*University of Arizona*

Professor Van Dyke specializes in the study of social movements and hate crime, with a focus on coalitions, social movement tactics, and mobilizing contexts.



**ELIZABETH WHITT**

*Indiana University*

Professor Whitt's research centers on the study of higher education with a focus on college student learning and success, and issues and trends in student affairs practices.



**MARJORIE S. ZATZ**

*Indiana University*

Professor Zatz's current research focuses on immigration policy, youth and families, and on race/ethnicity, gender and juvenile and criminal court processing and sanctioning.

**FOR MORE INFORMATION**

**CONTACT:** Professor Paul Almeida, [palmeida@ucmerced.edu](mailto:palmeida@ucmerced.edu)  
**ADDRESS:** 5200 N. Lake Road | Merced, CA 95343